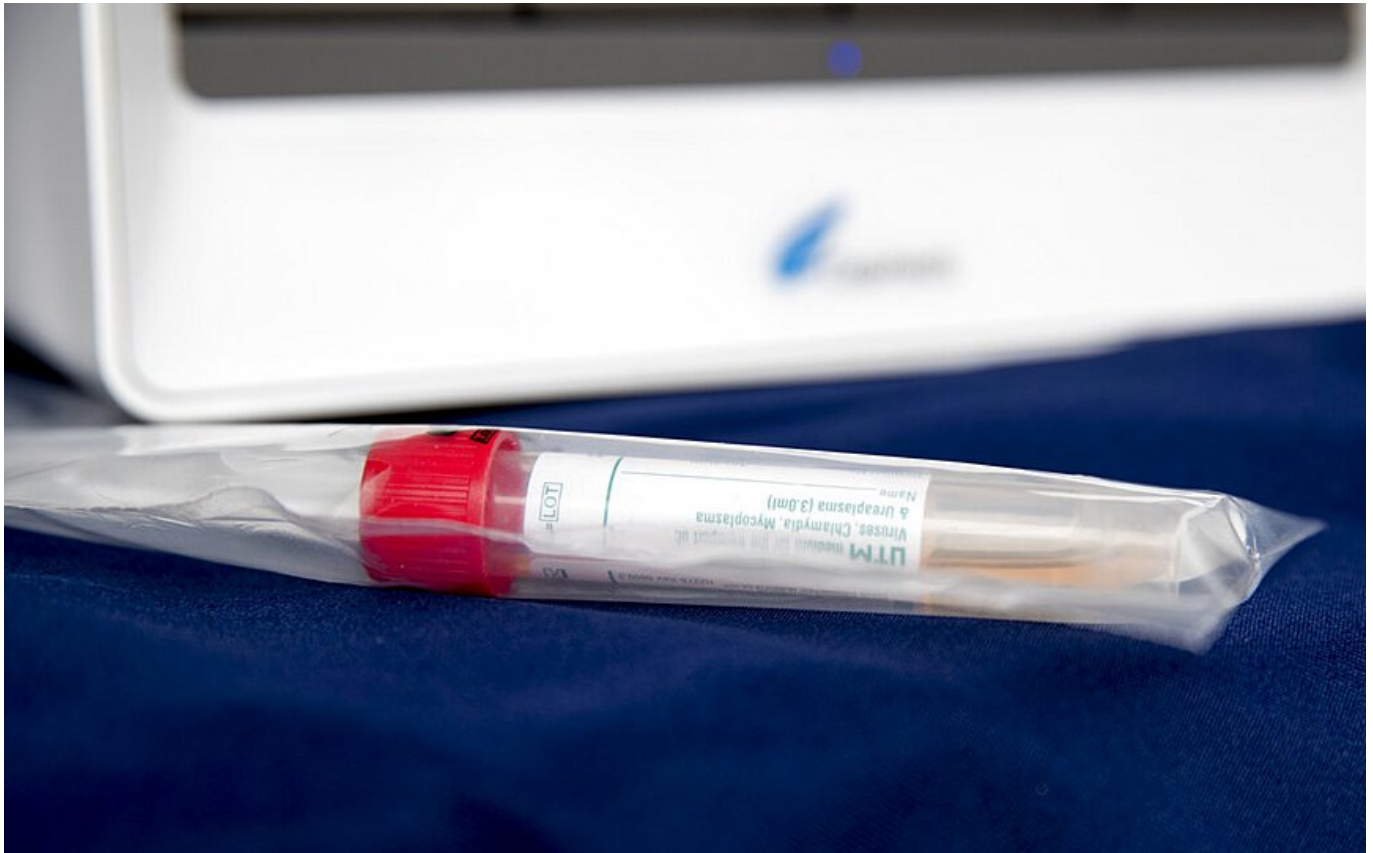


Ascension Greek Orthodox Church among Sites for COVID-19 Mobile Testing in NJ



FAIRVIEW, NJ – The Ascension Greek Orthodox Church Parking Lot, 101 Anderson Avenue in Fairview, is among the locations scheduled to open this week offering mobile testing for the coronavirus, NJ.com reported on May 9.

Bergen County, in partnership with Bergen New Bridge Medical Center, will offer walk-up saliva tests for COVID-19 infection and COVID-19 antibodies beginning on May 12, NJ.com reported, adding that “those who live or work in Bergen County are eligible for the tests but they must show proof of residence or employment.”

Bergen County Executive Jim Tedesco said, “Bergen County is still unfortunately the epicenter of this ongoing health crisis with nearly 17,000 cases and over 1,300 deaths from COVID-19, the most in all of New Jersey. Although recent statistics demonstrate the effectiveness of social distancing with the spread of the virus slowing, we are not out of this crisis and must remain steadfast in our efforts,” NJ.com reported.

According to NJ.com, the mobile testing sites will be available: Tuesday, May 12 at

Veterans Memorial Park, Englewood (located at the intersection of W. Demarest Avenue and N. Van Brunt Street); Wednesday, May 13 at M&M Building, 116 Holt Street in Hackensack (Hackensack Recreation Center Parking Lot); Thursday, May 14 at Ascension Greek Orthodox Church Parking Lot, 101 Anderson Avenue in Fairview; Friday, May 15 at 111 Outwater Lane, Garfield (Parking lot located behind Municipal Hall); Monday, May 18 in Lodi at a location to be determined; and Tuesday, May 19 at 540 Main Street in Fort Lee.

The sites will be open from 10 AM-3 PM and priority testing will be available for first responders from 9-10 AM at each site, NJ.com reported, adding that “the COVID-19 saliva test requires that a person does not eat, drink, smoke or chew gum 30 minutes prior to arrival.”

According to NJ.com, “test seekers must bring a driver’s license or some other form of identification and proof of Bergen County residency or that you work in Bergen County, for example a utility bill, pay stub, or work ID,” and those who have an insurance card, should bring it with them.

[thenationalherald.com](https://www.thenationalherald.com)